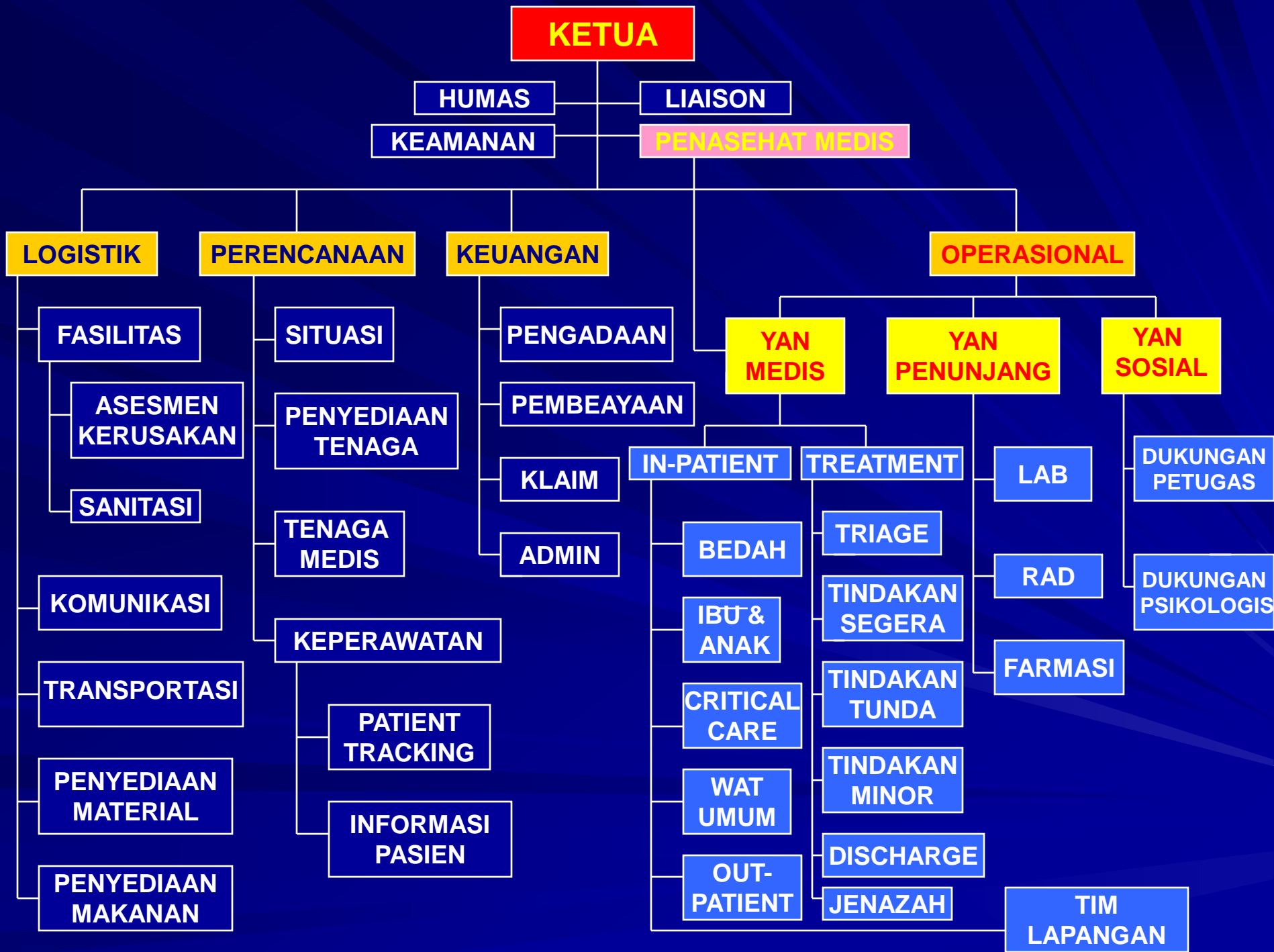
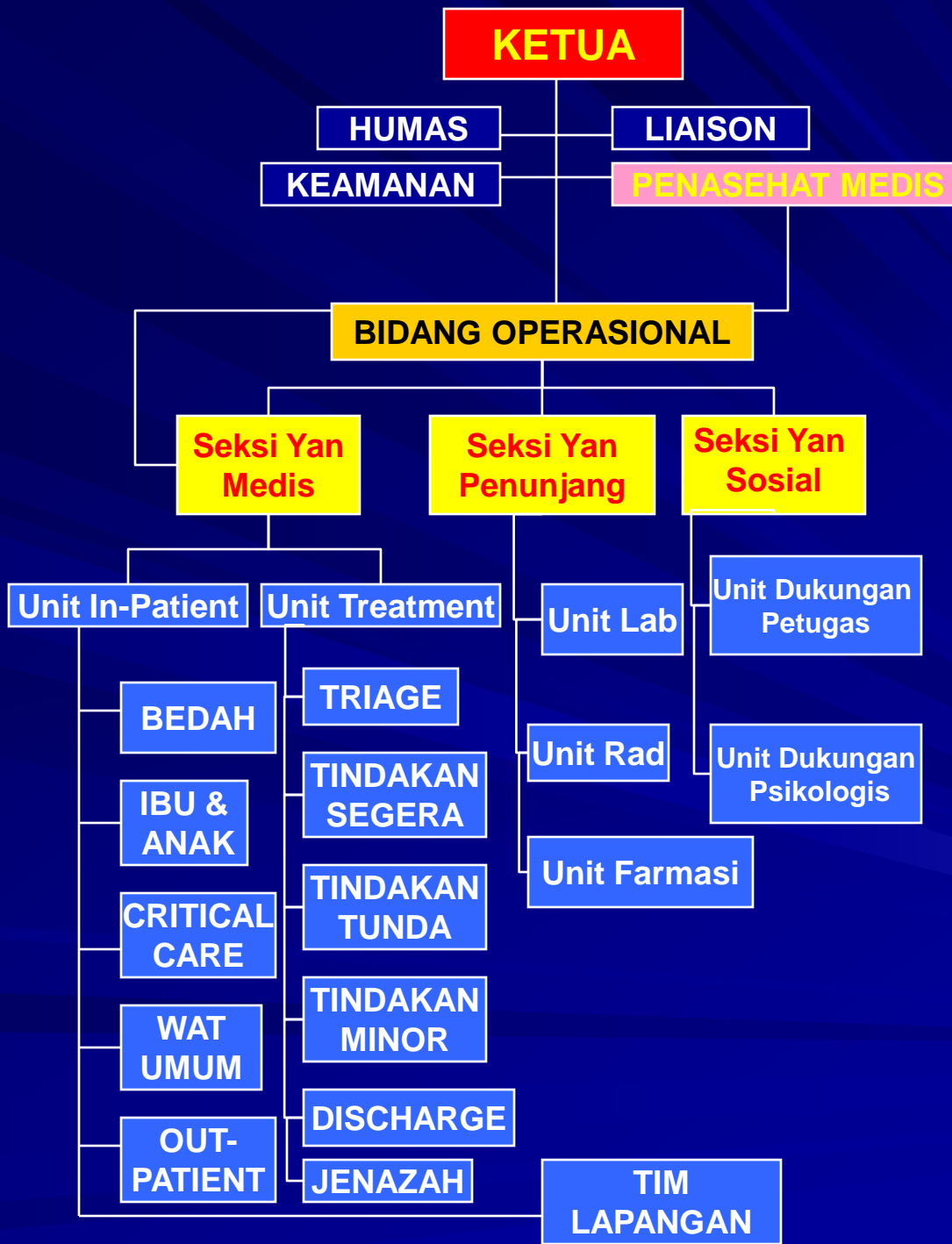


SEKSI OPERASIONAL

OPERASIONAL

- PENGOBATAN PASIEN
- EVAKUASI
- ALTERNATIF LOKASI PELAYANAN
- KEAMANAN PELAYANAN
- KEBERLANGSUNGAN PELAYANAN RS





PELAYANAN MEDIS

■ Mission :

"organize and direct the overall delivery of medical care in all areas of the hospital".

This is a large order, but you will have an In-Patient Areas Supervisor and Treatment Areas Supervisor to assist you in your duties.

■ You have two pieces of information which you must know as soon as it is possible :

1) what is the condition/status of the in-patient areas, and;

2) are the special treatment areas being established/staffed to receive the eventual rush of new patients from the community?

- **To help you realize your mission, you will stay in close contact with :**
 - **The Medical Staff Director to obtain proper physician staffing, and**
 - **the Labor Pool/Nursing Unit Leaders.**
 - **face-to-face contact with all your branch personnel**

- Since the Operations Section actually represents the essence for the hospital's existence (medical care), the other three sections must be kept appraised of the Operations Section activity.
- **You are expected to "think ahead" and project the needs of the two subsections assigned to your charge.**

IN-PATIENT

■ Mission :

- to assure the continued, quality treatment of the hospital's in-patients, and
- to provide for an organized, orderly discharge of patients.

SURGICAL SERVICES

■ Mission :

- to supervise and maintain the surgical capabilities at the maximum possible level**

- to care for the in-patients and those patients who will be arriving shortly.**

MATERNAL-CHILD

■ Mission :

- to supervise and maintain the obstetrical, labor & delivery, nursery, and pediatric services at the maximum possible level

- to care for the in-patients and those patients who will be arriving shortly.

CRITICAL CARE

■ Mission :

- to supervise and maintain the critical care capabilities to the maximum level

- to care for the in-patients and those patients who will be arriving shortly.

GENERAL NURSING CARE

■ Mission:

- to supervise and maintain general nursing services to the best possible level

- to meet the needs of in-house and newly admitted patients.

OUT PATIENT SERVICES

■ Mission :

- to prepare any out patient service areas
- to meet the needs of in-house and newly admitted patients according to the direction of the In-Patient Areas Supervisor.

TREATMENT

■ Mission:

- to initiate the set-up and supervise the patient triage and treatment process in the specialty areas assigned to your supervision.

■ You have three immediate priorities:

1) to appoint the six unit leaders under your direction,

2) to locate and ensure the opening of the special triage/treatment areas, and

3) to ensure that the personnel staffing/material requests are immediately made to the Labor Pool and Materials Supply Unit.

TRIAGE

■ Primary mission :

- to ensure the rapid triage of all incoming patients, and
- promote their disposition in a timely manner, to : IMMEDIATE TREATMENT, DELAYED TREATMENT, or MINOR TREATMENT

DISCHARGE

■ Mission :

- coordinate the controlled discharge, of patients received from all areas of the hospital.
- facilitate the process of final patient disposition by assuring adequate staff and supplies in the Discharge Area.

MORGUE

Mission :

- Collect, protect and identify deceased patients**
- assist Discharged Area Unit Leader in appropriate patient discharge**

ANCILLARY SERVICES

■ Mission :

- to organize and manage the ancillary medical services

LABORATORY

- Consider current needs, as well as **planning ahead for future operations.**

RADIOLOGY

■ Mission :

- to manage all diagnostic imaging services, and
- to maintain the optimum levels of service possible.

PHARMACY

■ Mission :

- to ensure the availability of incident specific pharmaceuticals.
- consider current needs, as well as planning ahead for future operations.

HUMAN SERVICES

■ Mission :

- to organize, direct and supervise those services dealing with the psycho-social needs of the patients and staff alike.
- to take an active role in the discharging of patients.
- look ahead and make plans to continue your mission in 10 hours, or 10 days if necessary.

STAFF SUPPORT

■ Mission :

- to see that provisions are made for the logistical and psychological support of the employee.
- to establish a rest and relaxation area for the hospital employees

PSYCHOLOGICAL SUPPORT

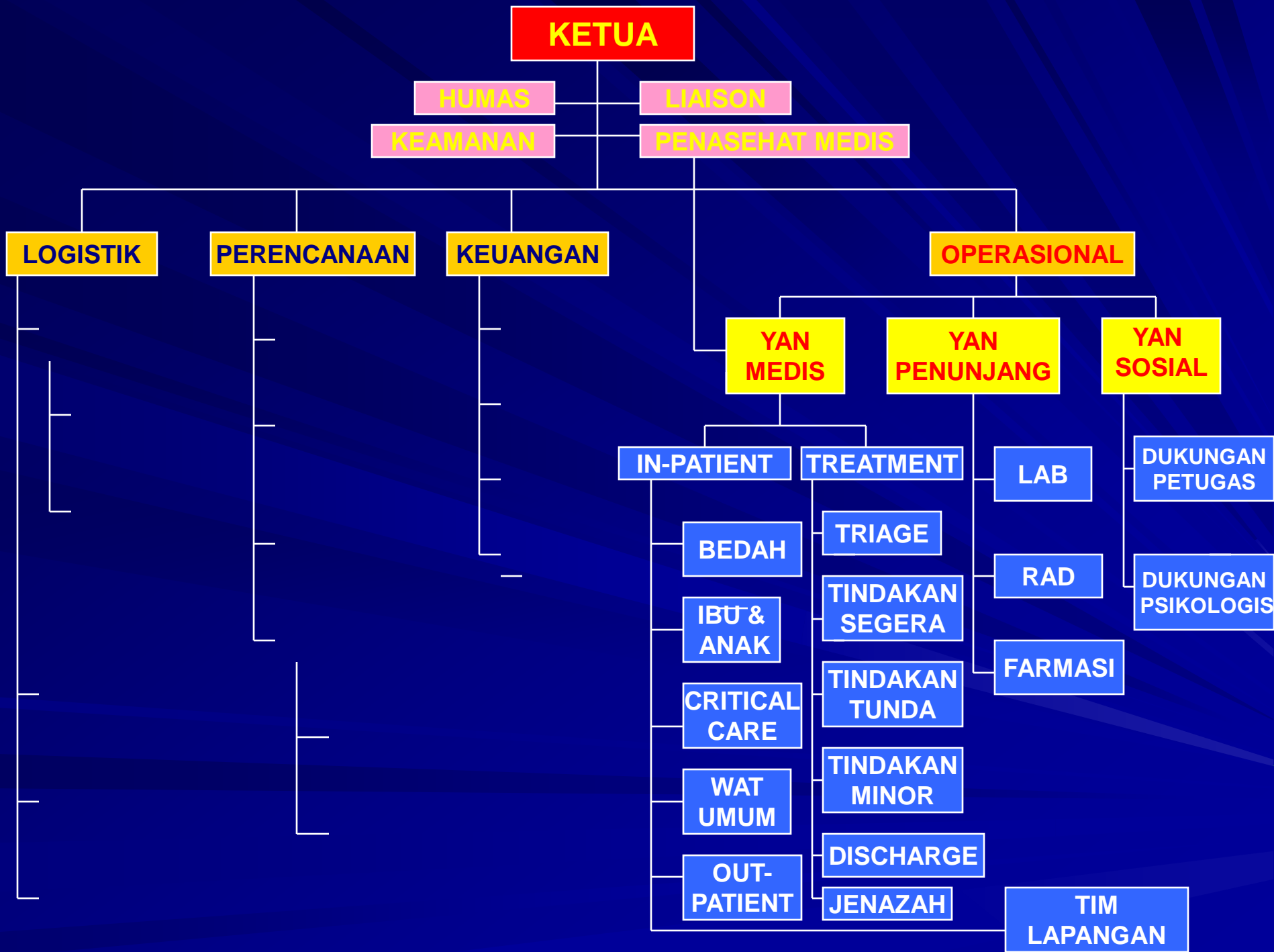
■ Mission :

- to see that provisions are made for the psychological support of the employee.
- dealing with the psycho-social needs of the patients
- to take an active role in the discharging of patients

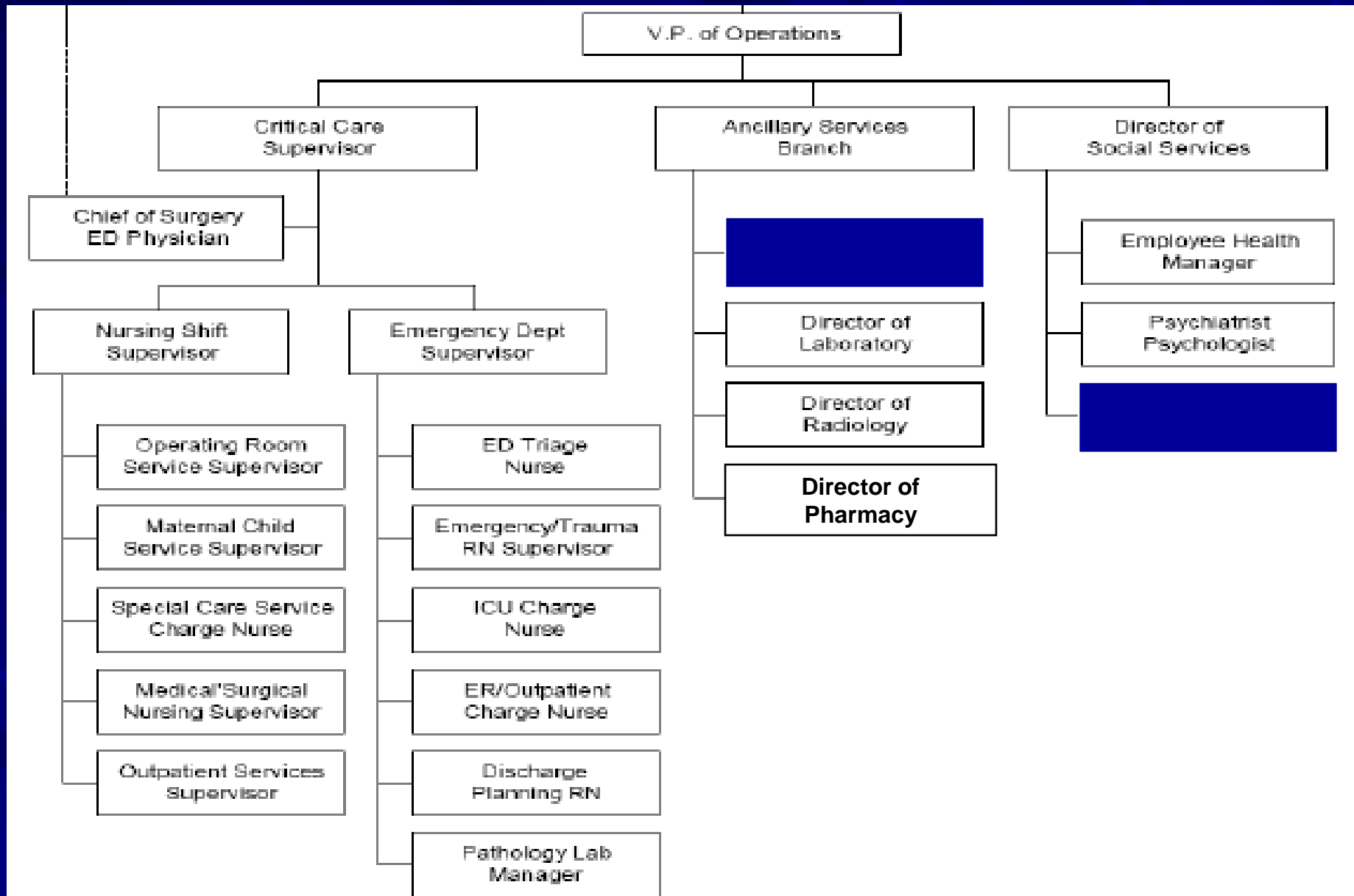
TIM LAPANGAN

- team composition (by speciality)
- team commander
- who can activate teams
- medical equipment
- protective clothing
- communications
- situation reports to the hospital
- transport arrangements

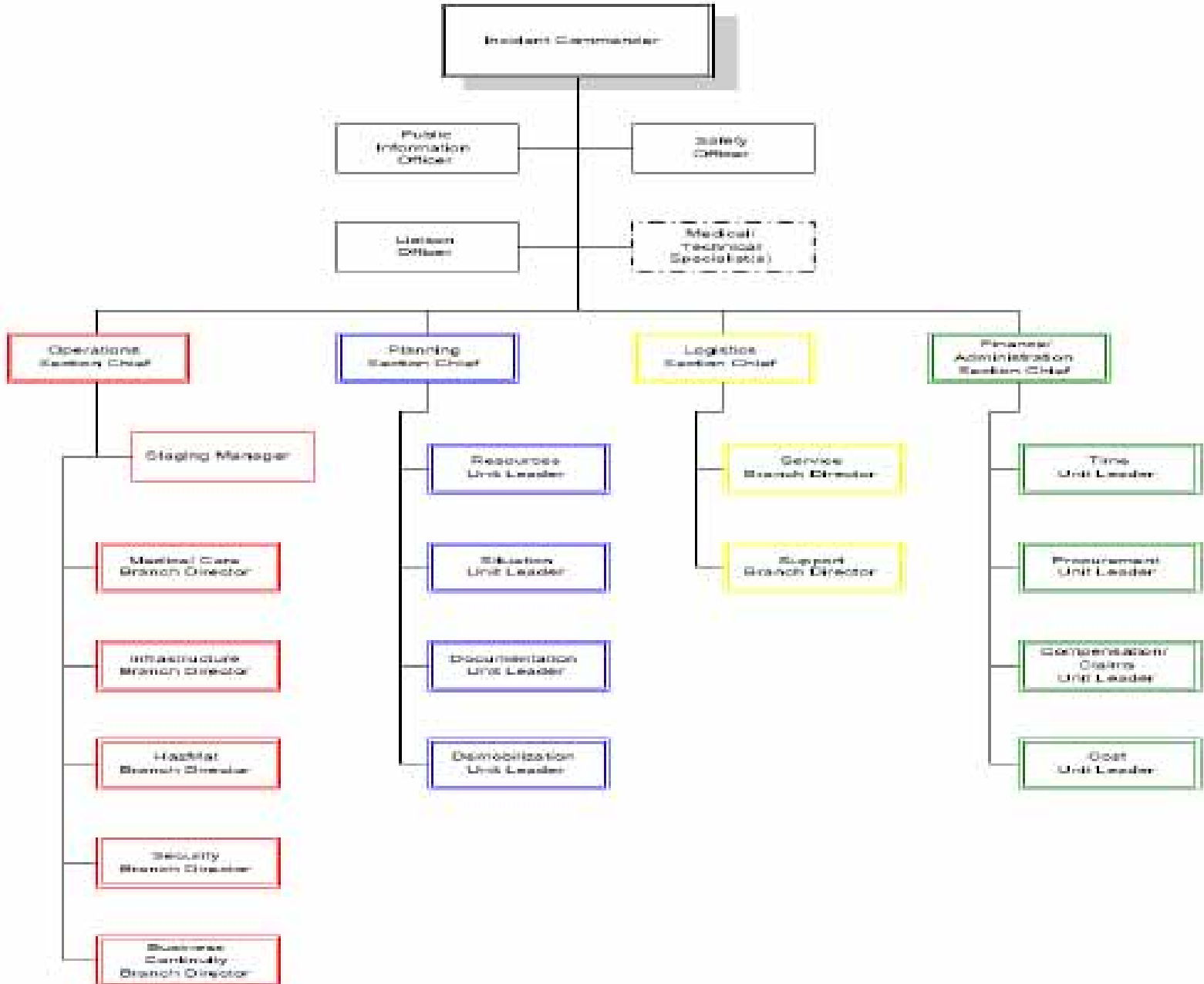
CROSS WALK

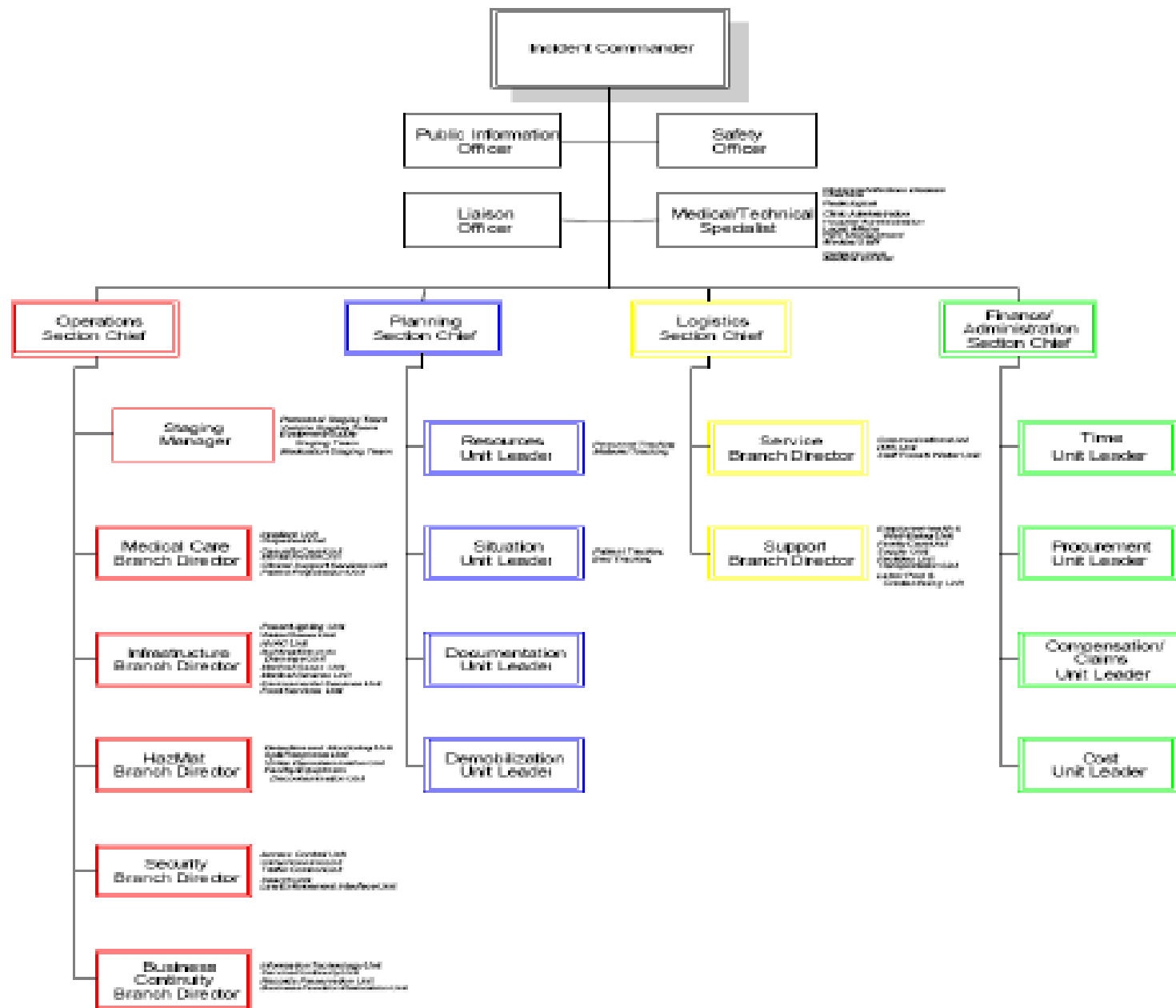


ORGANIZATIONAL CHART CROSS WALK



HICS





Operations Section Chief

Staging Manager

Personnel Staging Team Leader

Vehicle Staging Team Leader

Equipment/Supply Staging Team Leader

Medication Staging Team Leader

Medical Care Branch Director

Infrastructure Branch Director

HazMat Branch Director

Security Branch Director

Business Continuity Branch Director

Inpatient Unit Leader

Outpatient Unit Leader

Casualty Care Unit Leader

Mental Health Unit Leader

Critical Support Services Unit Leader

Patient Registration Unit Leader

Power/Lighting Unit Leader

Water/Sewer Unit Leader

HVAC Unit Leader

Building/Grounds Damage Unit Leader

Medical Gases Unit Leader

Medical Devices Unit Leader

Environmental Services Unit Leader

Food Services Unit Leader

Detection and Monitoring Unit Leader

Spill Response Unit Leader

Victim Decontamination Unit Leader

Facility/Equipment Decontamination Unit Leader

Access Control Unit Leader

Crowd Control Unit Leader

Traffic Control Unit Leader

Search Unit Leader

Law Enforcement Interface Unit Leader

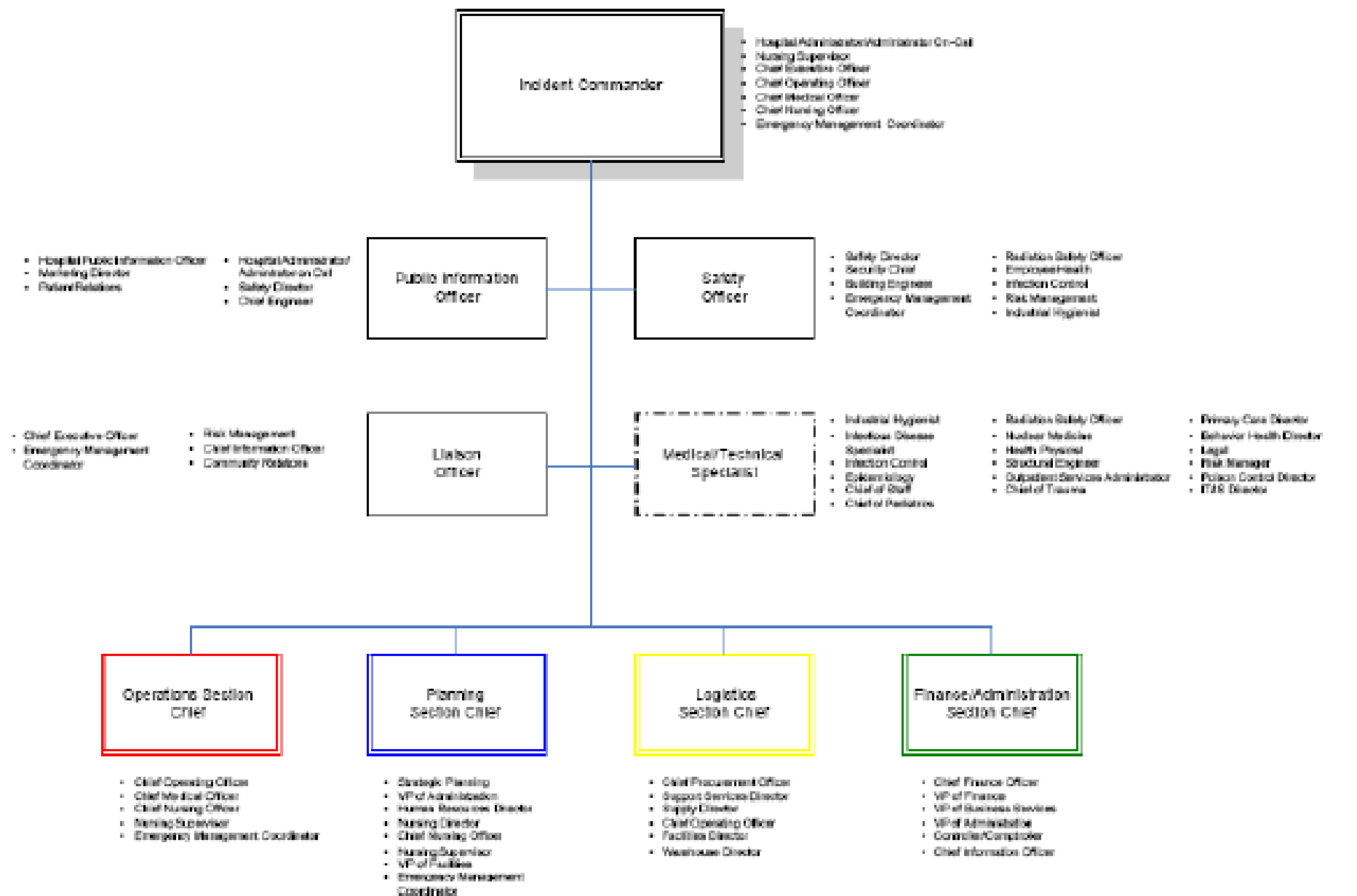
Information Technology Unit Leader

Service Continuity Unit Leader

Records Preservation Unit Leader

Business Function Relocation Unit Leader

Potential Candidates for HICS Command Positions



TERIMAKASIH